

The LYDEN



Issue 549 September 2020



For the Parish of
LYDDINGTON and WANBOROUGH

In the United Benefice of Lyddington, Wanborough, Bishopstone and Hinton Parva



The beauty of wood without the hassle

This traditional timber look window range, manufactured from low maintenance PVCu, has a grained wood effect finish.

Available in a wide range of colours, a combination of classic styling and modern materials makes it ideal for timber replacement in a conservation area.

- Reduce energy bills
- Six point high security locking
- Reduce condensation
 - No painting
- Double or triple glazed
- 10 year insurance backed guarantee

Also available, composite doors with the look and strength of timber doors but with no maintenance. Top security claw locking systems fitted as standard.

For all your double glazing windows, doors and patio doors telephone us now for a free no obligation quote from a trusted company with over 20 years trading.



DA Windows and Doors
High St | Wanborough

01793 790754



Windows & Doors



Nationwide
PROPERTY LETTINGS

One of the longest established letting agents in the county who bring you experience with a modern approach & unrivalled property expertise and marketing knowledge.

Call Gary Sumner on 01793 513130



www.nationwidepropertylettings.com

Sell your Home

for just

1%



+VAT

Contact us today on 01793 641 641
to arrange a free valuation!

PRIMARY
Tel: 01793 641 641

**HOMES
& LETTINGS**



Your local family run business

Vicar's Letter

Dear Friends and Neighbours,

Would you like to enjoy an extra two years on this wonderful planet of ours? According to research we can do this simply by joining in with everyone else that is starting a new academic year. While this year will be different in so many ways, schools, colleges and universities will try their best once again to feed the hearts and minds of pupils, teachers and support staff alike. Learning from and inspiring each other as the year progresses.

Twenty-four years of one particular piece of research has shown that those who read just thirty minutes per day live on average two years longer than their peers who don't. By the way, Facebook may not count! In an eleven-year span of that research, those who read a book were found to be 23% less likely to die than those who only read magazines and newspapers. Other reported benefits include improved intelligence, emotional IQ and a reduction in stress. And to be honest, anything that helps reduce the stress of this 'new normal' has to be a good thing.

A critical care sister was sent to see me by her matron. An articulated truck had driven over the top of her as she sat in her car while patiently waiting to enter a roundabout. Not surprisingly she had mobility issues as a result. The thing is, her low mood seemed to be even worse than we had anticipated. Unable to work, it turns out that she spent a lot of her time watching horror movies. Changing the type of movie, literally changed her mind, and in a matter of weeks she was a lot closer to the bubbly personality that we knew and loved.

So, for me there is no doubt that we become what we spend our time on and who we spend our time with, as our relationships with others can be affected in much the same way. Many a recovering alcoholic has been doomed to failure because of the unrelenting condemnation of those around them. Sadly, limiting another's potential through carping criticism happens in life and in ministry. However, the joy of books came home to me when a child tagged with 'behavioural issues' was transformed simply by being given the ability to read.

Discovering that they were then able to transport themselves away from their chaotic home environment noticeably improved their attitude towards their teachers and their peers too. They also became a joy for me to listen to. There are many quotes in the Bible on reading. The fact is, the Bible is God's Love letter to each and every one of us, where we can learn that our weaknesses are nothing new, and more importantly that we are loved despite them. Written that we may learn to build up rather than demolish, it goes on to promise more than a two-year extension, it promises eternal life. Happy reading!



With best wishes and prayers,

Bill

If you have anything that you would like our village prayer group to pray for please telephone 790088 or email villageprayers@gmail.com

Church Services News

After many weeks of closure due to the pandemic, and following discussions with both the worshipping community and members of the PCCs, we are carefully opening our beautiful churches one by one. This wonderful opportunity for worship and private prayer has to be guided by medical advice, together with Government and Church of England guidance, for the health and the safety of us all. The churches are being set out to provide 2 metre social distancing between households, church bibles and hymn books have been removed and hand gel is provided. Service sheets (which you take home with you afterwards) will be provided for each service. Sadly, we are not allowed to sing in church at this time.

There is also a change in how we may currently share Holy Communion. Although we are unable to open for some of our usual services we are resuming as many of them as possible. While we are not able to hold services at 8:30 am and 6 pm on Sundays, our 10:30 am service will continue to rotate around the Benefice as per the previous rota. Our midweek Eucharist will remain at St Andrew's on Wednesday evenings at 7pm.

As we currently have to keep a record of those who have visited our churches for up to twenty-one days after their visit, we are unable to open St Swithun's and St Mary's from dawn until dusk. To offer an opportunity for some quiet time, St. Marys and St Swithun's will be open on alternate Tuesday evenings between 6pm and 7pm. This will also be an opportunity for Holy Communion if requested by those who are able to join us. As our services entitled "A Little Eucharist..." (recorded on a Sunday and Wednesday and available on YouTube) have been so warmly welcomed, particularly by those shielding or unable to get to church because of work commitments, they will continue.

Church Services Sept 2020

| | | | |
|-----------------------|-------|-------------------|--------------|
| Weds 2 September | 19.00 | Midweek Communion | Wanborough |
| Sunday 6 September | 10.30 | Family Communion | Liddington |
| Tuesday 8 September | 18.00 | | Bishopstone |
| Wednesday 9 September | 19.00 | Midweek Communion | Wanborough |
| Sunday 13 September | 10.30 | Family Communion | Bishopstone |
| Tuesday 15 September | 18.00 | | Hinton Parva |
| Weds 16 September | 19.00 | Midweek Communion | Wanborough |
| Sunday 20 September | 10.30 | Family Communion | Wanborough |
| Tuesday 22 September | 18.00 | | Bishopstone |
| Weds 23 September | 19.00 | Midweek Communion | Wanborough |
| Sunday 27 September | ----- | No Service | Hinton Parva |
| Tuesday 29 September | 18.00 | | Hinton Parva |
| Weds 30 September | 19.00 | Midweek Communion | Wanborough |

Wanborough Farmers' Market

Wanborough Farmers' Market Saturday 19 September 9am to midday, Wanborough Village Hall. After relaunching in August, we hope nothing stops this market. A new trader is the Gourmet Goat Farmer whom some of you might have met at Lotmead. Ken will be outside with his fish, and in the hall will be familiar faces: the Herb Nursery, Ross and his honey, Tracy and her veg, Hinton Marsh Farm with their delicious meats, and Stainswick oil to fry them in! We also hope to see our Traidcraft stall and Gill with her lovely silk scarves to cheer us up. We also hope the Community Connect Café will be back.



Our thanks to the Wanborough Community Trust for taking us under its wing and enabling the markets to start again. More information from Sue or David Birley, 01793 790438, sbirley@gn.apc.org

Community Café Returns

If at all possible (restrictions permitting!) we will be back offering tea, coffee and home baked cakes and cookies at the Farmers' Market in September (Saturday 19th). It's been a long time and we've missed you, and inevitably we'll be doing things rather differently; come and see! ***The Community Coffee Morning Team***

Wanborough Covid Support Group

As the government continues to relax the Covid-19 restrictions, we hope everybody is enjoying a bit more freedom but still managing to stay safe. Over the past few months, the Wanborough group of volunteers has helped many villagers with shopping, prescription collections or just a friendly call to check in on others. We would like to thank the volunteers for their help so far, and remind everybody that this group remains available to anyone who continues to need it. Simply email the administrators on wanboroughwiltscovid19suppgroup@yahoo.com or call Rachel on 07717173577 should you need any help. Alternatively, refer to the list of contacts on Wanborough.org or Wanborough Noticeboard Facebook page. Please continue to stay safe!

Swindon: It's up to all of us to control the spread of coronavirus



Residents of Swindon are being urged to play their part in minimising the spread of COVID-19 to help keep themselves and the community safe. Swindon Borough Council has been working alongside partner agencies to encourage Swindonians to keep following Government advice to control the spread of the virus. In particular, this includes continuing to wash hands, wearing face coverings in enclosed spaces and social distancing from people not in their household.

People are also being asked to stay at home if they have symptoms of coronavirus, no matter how mild. The symptoms to look out for are: a high temperature, a new continuous cough or a loss of, or change to, people's sense of smell or taste.

Crucially, **anyone who has symptoms must book a test immediately**. You can book a test, either at a local testing centre or by ordering a home testing kit, by calling 119 or visiting the NHS website.

The Council's 'Swindon: It's up to all of us' campaign was launched in August and aims to engage the community and encourage everyone to play their part in keeping Swindon safe. So far, this work has included leaflet drops, engagement with local businesses and community groups, and social media campaigns.

Regular updates are given on Swindon Borough Council's Facebook and Twitter pages so head there to find out the latest information and advice. Together, we can control the spread of COVID-19.

Emma Pocock, Swindon Borough Council



Wanborough Parish Council

Parish Council continue to hold all meetings virtually via Zoom. Residents are welcome to join, submit questions and listen to meetings. Please e-mail the Parish Clerk for the meeting ID and password if you wish to join.

The next meeting is due to be held on **Monday 28 September at 7.15pm.**

Village Maintenance

The borders around the edge of St Andrew's Church car park have been cleared. These areas had become very overgrown with weeds and brambles, but after a good clearance and tidy up plus some additional planting it now looks a lot better. Some bulbs have been ordered which will be planted in the borders over the autumn so hopefully will look really nice next spring.

The Handyman will start to concentrate on cutting the hedges that Parish Council are responsible for from September onwards.

We carry out our own checks around the village to identify any maintenance that needs doing. However if there is anything that you feel needs urgent attention around the village, then please report any maintenance issues to the Parish Clerk by either e-mail clerk@wanborough.info, by using the "Maintenance Report" on the Parish website www.wanborough.info, or alternatively text, ring or WhatsApp on telephone number 07588 769829.



Wanborough Rock Dragon

Well done to everyone who has decorated or painted a pebble and added it to the Rock Dragon in Green Lane. They are all looking really great and the tail has now grown to over 150 pebbles the last time they were counted.

For those who haven't spotted it yet, the dragon can be found on Green Lane, at the Kite Hill/Rotten Row end of the path.

Spread a bit of joy. Decorate a rock and add it to the dragon's tail. Please do not touch or remove any rocks / pebbles, just add your own.

Please check the Parish website www.wanborough.info for regular updates and information.

Parish Council can be contacted on 07588 769829 or e-mail clerk@wanborough.info - Please get in contact if you need help with anything.

Wanborough Allotment Competition

Although the Wanborough Show couldn't be held this year due to Covid 19, we decided to still go ahead and hold the Annual Allotment Competition.

We were lucky to have Jo Baker from Daisy Day Plants to carry out the judging of all the allotments. Many thanks to Jo for taking on this role especially as the virus has hit the Horticultural Industry exceptionally hard, making it a very stressful year.

The first round of judging took place on the 26 June; the standard was exceptionally high this year and, out of 52 allotment holders, 26 of them scored highly enough to go through to the second round which was held on 31 July.



The main areas that the judge was looking for on an allotment plot were the cleanliness of the site, the health of the crops, the versatility and numbers of crops grown and the composting of waste. With such a high standard this year the judge did not have an easy job deciding which plot was the best, with only a few points between the top three.

Well done to all the allotment holders who took part in the competition.

At the time of going to print it is hoped to have a picnic and presentation at the Allotments on 31 August at 2pm and combine it with the Annual Allotment Assembly. Some more photos of the prize winners and their plots will be published in next month's Lyden magazine.

The results are as follows:

Best Kept Allotment

| | |
|------------------|------------|
| 1 st | F Day |
| 2 nd | D Montauro |
| 3 rd | J Winston |
| Highly Commended | D Hayward |

Best Kept New Allotment – For allotment holders who have recently taken on an allotment within the last two growing seasons:

| | |
|------------------|--------------|
| 1 st | S O'Neill |
| 2 nd | N Mose |
| 3 rd | S Hardwick |
| Highly Commended | Mrs Williams |

We currently have a small waiting list for an allotment, so please contact the Parish Clerk if you would like to be added to the list.

VE Day 75th Anniversary Benches

Two commemorative benches were intended to be installed in time for the 75th anniversary of VE Day in May, but this was delayed due to complications caused by the Coronavirus pandemic.

These benches are now ready and, hopefully by the time you receive this magazine, one will be installed at Church Meadow.

With thanks to Colin Hatch and Bill O'Connell for organising these beautifully-designed benches for us, which will be an excellent way for us all to remember those who gave so much during WW2.



Wanborough Traffic Calming Consultation

At the Parish Council meeting on Monday 27 July, Parish Council discussed and reviewed the proposed traffic calming scheme put forward by Swindon Borough Council for High Street. It was agreed to raise a number of objections and concerns, and to put forward a number of proposed improvements. A copy of Parish Council's letter to Swindon Borough Council is available to view on our website. Many thanks to all residents who contacted us with their concerns.

Parish Council are very much in support of any measures to prevent "rat running" through the village, but it needs to be done correctly so that the problem is not pushed to other areas of the village. The measures need to respect the rural character of the village, especially within the Conservation Areas, and the proposals need to be effective.

We hope that Swindon Borough Council listen to what we have said, as well as to all the comments and concerns raised by residents, in order to bring forward an improved scheme for the village.

We will keep you updated on this matter.

Hooper's Field Pavilion

At the time of going to print we are pleased to confirm that Hooper's Field sports pavilion has started to re-open for club users, with restrictions. Government guidance still states that areas such as changing rooms should remain closed, but with a one-way system in place, other facilities within the pavilion can now be used.

Parish Council are pleased to see all clubs back using the facility. Although activities are not completely normal yet, it is great to see the facility being used so well.

If you wish to join any of the clubs please see our website for further details.

BT Red Phone Boxes

Parish Council recently received a request from a resident to convert one of the red telephone boxes in the village to a mini library. Parish Council discussed this suggestion at their meeting held on 27th July and unanimously agreed it would be a good idea.

Parish Council have therefore submitted an application to BT to adopt the two red telephone boxes in the village, one on Church Road and one on High Street. Once this application has been processed, we will consult with residents to decide what the best options will be for the village and whether residents would support a mini library / book swap.



Planning Update

Redlands Farm Development

Swindon Borough Council have already granted "outline" permission for 370 homes at the Redlands site. The next stage of the planning process for this site is for the applicant to submit more detailed plans as part of their discharge of conditions.

Parish Council are discussing and reviewing every single application as and when notifications are received from SBC. For some applications there are a considerable number of plans and documents to view so it takes a long time to review them all. So far there have been 7 discharge of condition applications including:-

S/COND/20/0710 - Discharge of condition 6 (Phasing Programme and Details)

S/COND/20/0708 - Discharge of condition 8 (Design Code) – Parish Council have submitted an objection to this as the proposed design has changed considerably to that agreed within the outline permission.

S/COND/20/0868 – Discharge of condition 25 (Construction Environment Management Plan (CEMP) Method Statement) – Parish Council have objected to the proposed construction route.

S/COND/20/0909 - Discharge of condition 12 (Tree and Hedgerow Retention & Removal Plan) and 13 (Tree Protection)

S/COND/20/0877 - Discharge of condition 10 (Framework Landscape, Ecology and Arboricultural Management Plan (FLEAMP))

S/COND/20/0876 - Discharge of condition 30 (Drainage)

Inlands Farm – Science Park – Planning Reference S/OUT/18/1943 – Revised plans

At the time of going to print Swindon Borough Council have confirmed that the above planning application was due to be discussed and determined at their Planning Committee meeting on Tuesday 25 August 2020 at 6pm.

Parish Council have submitted a strong letter of objection and will continue to object to any development at this site. Parish Council hope that SBC Borough Councillors vote to reject this application at their meeting.

We will keep you updated on all planning application on our website and Facebook page.

Liddington Parish Council



Speed Sign

The first download of data captured by the speed sign was completed during July. The data was analysed and showed some sobering information regarding the speeds some people were travelling in a 30mph area. The data was passed to the Police, who confirmed that they were happy to use it as it enabled them to plan any enforcement action at appropriate times, rather than by instinct. The local neighbourhood policing team have been asked to factor in speed checks when possible considering other commitments.

Share Your Surplus Event

A reminder that the Fruit & Veg Swap event will take place on Sunday 6 September from 11am until 2pm outside of the Village Hall, or inside if wet. Everyone is welcome to attend, not just the keen gardeners with an excess of fruit and vegetables that they have grown. If anyone would like to register an interest, please contact Sarah Hill by email, Sarah@liddington.org or telephone 07534 536071.



Allotments

The Parish Council has been negotiating with the Diocese of Bristol to take over the running of the allotments via a 15-year lease agreement. As negotiations are nearing completion, if anyone is interested in having an allotment of their own or would like further details, please contact the Parish Council. The area is currently being cleared and standard plot sizes pegged out ready to be allocated.

The next Parish Council meeting will be held on Wednesday 2 September 2020 starting at 7pm.

If the current social distancing guidelines are still in place which does not allow a face to face meeting and any resident would like to join the meeting to speak to the Council and then watch and listen please contact the Clerk for the log in details.

Alternatively you can ask a question, raise an issue or make a comment in writing to the Clerk, at parishclerk@liddington.org by Friday 28 August. All points will be answered in writing and in the meeting minutes.

Val Curtis, Clerk to Liddington Parish Council

Borough Councillor Update from Gary Sumner

My Ward Councillor meetings are taking place in person again!

Join me at Wanborough Village Hall 9-11 Saturday 5 September.

The £17.2M scheme to upgrade Junction 15 has finally commenced. The work behind the scenes to get this to fruition has been incredible and once completed it will reduce congestion and pollution and will enable more logical use of the junction including the dedicated London bound lane being added to the Southbound A419. I had to 'pitch' SBC's request to a meeting of the 'Local Enterprise Partnership' back in January and was successful in obtaining £3m whilst I then had to ask colleagues at Swindon Borough Council to support the final £4.8m

A properly functioning junction will mean that 'rat running' through the villages of Badbury, Liddington and Wanborough will be less likely – drivers should not need to avoid Junction 15, but during construction I anticipate there will be times of frustration. Throughout the work to get this scheme started I have had site meetings with Highways England to agree diversions during construction and implement a 'No Right Turn' for Northbound traffic coming from Marlborough into Badbury (which has often been a shortcut used by frustrated motorists). Ridgeway Road will be used for overnight diversions as an alternative.

Another by-product of the scheme is the permanent closure of Day House Lane which will make a fantastic cycling and riding route from Liddington to Coate Water and reduce rat running through Badbury dramatically.

Burycroft: I met officers last year to discuss signage and additional 30mph signs have been added as well as 'slow' road markings and horse 'warning' signs. They will also do some work on the damaged verges.

Church Road: I submitted some Ward Councillor Highways requests following a request from Parish Council. Traffic counters have identified considerable speeding between Ham Road and Callas Hill – the police have been informed. The Parish made a request for double yellow lines on a section of Church Road and initially this request was rejected, but I met Highways officers on site in July and discussed the issues and they can see some merit. There will be an informal public consultation in September to show the areas affected and get feedback. There are long stretches on Church Rd where parked cars make passing dangerous and I support the Parish Council's concerns. However, I do not want to push the problem elsewhere!

Broadband – Gigabit Fibre Programme & BT Openreach:

An update on timing as we had hoped to be able to publish the details for 1 September.

As you will see below in the update from Michelle Maidment the Rural Engagement Manager of BT Openreach, we are looking at end of September for the decision and publish/share with residents in October. The Government Department for 'Digital Culture, Media & Sport (DCMS) have been inundated with interest in the Gigabit Fibre Programme.

FROM BT OPENREACH:

Openreach is actively investigating the options to deliver ultrafast, ultra-reliable fibre-to-the-premises (FTTP or "Full Fibre") infrastructure to the Parishes of Wanborough, Chiseldon and Bishopstone using our Community Fibre Partnership programme. The scheme allows residents the opportunity to work directly with Openreach to bring ultrafast connectivity to every premise in the Parish. Discussions are currently taking place with the Department for Digital, Culture, Media and Sport (DCMS) to establish how the communities can pledge towards the gap cost of the build after Openreach's contribution using the funding that is currently available to residents that live in rural areas.

Full fibre enables broadband speeds of up to one gigabit per second (1000 mbps) – that is more than 15 times faster than today's UK average broadband speed. A report by the Centre for Economics & Business Research (CEBR) found that connecting everyone in the South West to Full Fibre broadband would create

a £4.3 billion boost to the local economy by unlocking smarter ways of working, better public services and greater opportunities for the next-generation of home-grown businesses.

Due to the size of the planned programmes, we need to be sure that they can be delivered on time and within budget before approval is given for communities to sign up and pledge their vouchers towards the build. It is hoped that a decision will be reached by the end of September and the planned approach communicated shortly afterwards. We've already brought better connectivity to more than 120,000 homes and businesses in nearly 1,000 communities across the UK through our Community Fibre Partnerships. **Michelle Maidment – BT Openreach (Rural Engagement Manager)**

I thank you for your patience and share your frustration at delays but this is a Government funded initiative and they have to agree the programmes.

Gary Sumner, Ridgeway Ward Councillor

Please call me on 790814 or email: gary@ridgewayvillages.co.uk . Get the latest Wanborough, Liddington, Bishopstone, Hinton Parva & Badbury news at: **www.ridgewayvillages.co.uk**

Wanborough Playgroup

We are looking forward to be starting back on Tuesday, 1 September. With some restrictions lifted we will be back to our normal opening hours of Monday-Friday 9.00am-1.00pm. The 2m social distancing still applies and we ask parents/carers to follow our one-way system and socially distanced queueing at drop off/pick up times.

We hope the Autumn term gives us weather that will enable us to be outside as much as possible.

We wish the children well who left us in July and will be starting their new and exciting journey at Wanborough Primary School in September.

If you would like to register your child to start in September or any time after that please email: wanboroughplaygroup@hotmail.co.uk or message us via our Facebook page @wanboroughpreschool. **Sarah Ingram, Playgroup Supervisor**

Wanborough Village Hall

The Village Hall Management Committee met virtually to go through the revised guidelines for the wider opening of the hall. A covid-19 risk assessment was reviewed as well as "Special Covid-19 booking conditions". These documents are available on wanborough.info alongside our normal booking conditions and booking form. Please read through these documents before booking the hall to ensure we can accommodate your needs. As restrictions alter, we will revise the "special booking conditions".

Regular users have been emailed with the hope that they will be able to operate in some way in September.

We are pleased that the August Farmers' Market was able to run. We thank the Wanborough Community Trust for their help with the insurance for the market.

Our AGM will be held on Monday, 14th September at 7.00pm. We hope that we will be able to hold this in the hall and would invite anyone who would like to know more about the hall or would like to join our Committee to come along and join us. Please look out for posters and updates on Facebook nearer the time which will confirm the venue. If you would like more information about what being on the committee entails, please email me: sarahingram@btinternet.com. **Sarah Ingram, Secretary**

News from the Bell Towers - Church Bells to Ring Out Again

The fine bells of Wanborough and Liddington have been silent since cathedrals and churches were closed in mid-March as part of the national lockdown to reduce the spread of coronavirus. The Church of England have at last agreed that bells can be rung again for Sunday Services, but after such a long period of being silent, they have had to undergo a vigorous inspection and risk assessment. I can report that Wanborough and Liddington bells were thoroughly checked over in early August, and they are both in first class condition, and ready to be rung.

Prior to ringing for Sunday Services in September, the bells will have been rung on 15 August to commemorate the 75th anniversary of VJ Day and the end of World War Two. However, all ringing is now limited to 15 minutes, and only 3 or 4 bells will be rung so that social distancing between ringers can be achieved. Sadly, the ringers are not allowed to practice, so after a 5 month break, we could be a little rusty.

2020 will be the year of very little bell ringing at Wanborough and Liddington. Recruitment of new ringers has been put on hold, this years weddings requiring bells have been moved to 2021, and ringers from other churches are not permitted to visit other towers.

Tony Pullan, Tower Captain, 01793 790904.

Tennis Club Update

As summer progresses and the weather remains warm, we are seeing more people out on the courts for our club play which restarted at the end of July. Over the past few weeks, Becky ran adult and junior box leagues where each signed-up player got 5-6 matches. The adult singles league proved to be a great success with a big uptake by the men, whilst the junior league is still in progress with matches going well. Due to popular demand, Becky will be running another one from September; this time it will include doubles so hopefully we will get some ladies signed up as well as the men!!! Becky is delighted to start up the group coaching again from the beginning of September; anyone interested in signing up for group or private coaching, or the box leagues should contact Becky Watts directly.

We would like to invite everyone to join the Club, particularly as we will be offering half price memberships from 1st October onwards. Watch out for the details on our website: <https://clubspark.lta.org.uk/WanboroughTennisClub>. We are also offering Pay and Play for non-members, at a cost of £15 per court per hour; anyone interested in booking should contact Melanie Brough on 01793 741277.

Please remember that we are not out of the "Covid woods" yet, so we must continue to adhere to the government and LTA safety guidelines by pre-booking courts on our website as well as providing all players names in advance of play.

SWINDON & DISTRICT SAMARITANS -ALWAYS THERE



Without a doubt these are strange times, as the coronavirus changes the way we live. In the midst of this, Swindon & District Samaritans remains steadfast in continuing to be there for anyone who is struggling to cope.

Despite some of our listening volunteers isolating and shielding, your local branch has remained open throughout the pandemic to provide a confidential listening service by phone and email. Many of our wonderful volunteers took

on extra shifts during the most difficult times so we could continue to provide much needed emotional support. Even now, every six seconds Samaritans answer a call for help.

Frontline health, care, emergency and key workers have put their physical and mental health under pressure as they form the frontline against coronavirus. To help the helpers, Samaritans have partnered with Shout, Mind, Hospice UK and The Royal Foundation to offer round the clock, one to one emotional support to those on the front line to help ensure they get the right support with their mental health, now and in the future.

Like so many, our branch has needed to adapt given the constraints of the pandemic. We are now able to recruit and train all of our listening volunteers online using online video conferencing. We always welcome new volunteers and hold regular information events where you can find out more and have the opportunity to speak to some of our volunteers. If you'd like to find out more, please contact us: samsrecruitment@btconnect.com

We are just welcoming the first of our volunteers who have been virtually trained into the branch as they look to start the next phase of their volunteering by providing emotional support on the phone and by email. Even as we learn how our lives are changing and respond to these different challenges, it is great to greet new volunteers who will now be there to support and listen to others at a time which has never been more important.

Anyone can contact Samaritans for free any time from any phone on 116 123, even a mobile without credit, or email jo@samaritans.org.

Hidden Gems

At the start of 2020, we lived in an age where free time was relatively low and convenience for many was everything, and then Covid-19 came along and gave us all a good shake up.

As we approach the end of the Summer, many of our favourite shops and attractions have reopened. However, for many country living and outdoor pursuits are still top of the list, here are a few hidden gems all within an hour's drive to get out and explore.



Photo © David Martin (cc-by-sa/2.0)

Buscot Weir –the picturesque village of Buscot is south east of Lechlade. Take a picnic explore the weir and the smallest lock on the Thames. There is also a play park opposite the National Trust Car Park and a tearoom with a garden located close by.

Faringdon Folly Tower & Woodland – The Folly is an iconic building on top of the hill, it is surrounded by woodland and is a great place to let the children roam, the Faringdon Cycle Park is also close by, a great place for youngsters learning to cycle.

Wychwood Wild Gardens –the Wychwood wild garden is a great local facility owned and managed by the community. A lovely wooded area with ponds. A great place to go for a family walk and to feed the ducks.

It will soon be autumn which will bring more dazzling displays of colour, **Westonbirt Arboretum** and **Stourhead** are great places to visit but it is worth checking their websites before visiting for guidance on booking and restrictions,

If you have any photos or suggestions to add to next month's edition, please send them to email lydenmagazine@gmail.com.

Travelling in the time of Covid

Wondering what it is like travelling at the moment? Here's what one of my clients had to say:-



"I travelled on 27 July from Birmingham to Corfu and stayed in the resort of Sidari.

I expected the airport to be a little chaotic, but it ran so much more smoothly than I thought and it was probably one of the best flights we've had. You will be required to wear a mask the whole time in the airport and throughout the flight except for when eating and drinking. The air hostesses do encourage passengers to use card payments for purchases but not essential.

Every traveller heading to Greece has to fill out a Passenger Locator Form at least 24 hours before their trip. This asks for information such as who they are travelling with, where they live, their destination address etc.

On the day of flying, you are emailed a QR code. These were scanned at the airport when we arrived and it looks like codes are generated randomly and you may be required to take a test if selected.

We took the coach transfer provided with our package and masks are required for the journey. On arrival at our Hotel there were social distancing markers at reception. While it's not mandatory to wear a mask around the hotel for guests, all staff do wear them.

On check in I signed a form for housekeeping, you can opt in or out. There's just so many things they've thought about, they really have it covered. Sunbeds were all spaced out around the pool too I really couldn't fault.

In and around the resort everything felt pretty normal, I felt safe and comfortable knowing that the locals have got everybody's best interests at heart. Restaurants have removed some tables so everyone can social distance and enjoy a meal out. Masks are only required on transport and in shops. All in all it's been so nice to get away from the UK. There's clear guidance on what's expected, and they want to make sure the island is looked after.

I've got to admit from the minute we landed, I was so relieved and so glad we'd booked. I would not hesitate to travel again at all during the pandemic."

If you are interested in holidaying abroad, do contact me. With my business supported by Midcounties Coop you are not only protected under ATOL and ABTA scheme it is also the largest UK independent society. **Judi Moore**, Judi.moore@thepersonaltravelagents.co.uk, 01793 791238

Fully Loaded Jacket Potato Salad

There are as many different potato salad recipes as there are people to write them. However, I quite like the idea of being able to get this one on the go whilst you are baking something else. Plus, as the ingredients are store cupboard items for us, it's not something I need to plan for particularly. Jacket potatoes have a different flavour to boiled or steamed, and in a pleasant way, it does notice in this salad despite all the other flavours involved.

Makes enough for approx. 4 - 6 servings

Ingredients

- 4 medium waxy potatoes washed and pierced through the skins
- 1 medium onion chopped quite finely
- 4 back or 8 streaky rashers of smoked bacon cooked until crispy and chopped up
- 100g grated tasty mature cheddar cheese
- 3 – 6 tablespoons of mayonnaise start with less and add more to suit your taste

You will also need

- A roasting pan or baking tray
- A mixing bowl

Method

- Preheat the oven to 200c
- Bake the potatoes for 1.5 hours until the skins are crispy and the potato flesh is soft
- Allow the potatoes to cool completely then chop them into bite sized chunks
- Put the potatoes into a mixing bowl with the remaining ingredients and gently stir them together, adding more mayonnaise if necessary.
- Transfer to a serving bowl, and decorate with a few bits of reserved bacon
- Remember to share it with your nearest and dearest!

For more, easy to follow recipes, using seasonal ingredients, please visit my website at www.eco-marketplace.co.uk



Sparkle & Shine

Established fully insured cleaners

Available for:

- Weekly, Fortnightly or Monthly cleans
- Seasonal Spring cleaning or
- End of Tenancy cleans

Please call or email to discuss your requirements & obtain a free quote

sparkleyourhome@icloud.com

07935543158



Remembering Pete Bell

1929 - 2020

Pete who was born at Foxhill in September 1929 and was christened John Richard Bell at Wanborough Parish Church sadly passed away on 18 May at Park View Nursing Home, Blunsdon. (He became known to most as Pete after his elder sister decided she liked the name better.)

Pete later moved with his parents to Lambourn where he spent his childhood years. On leaving school he trained as a motor mechanic at the local firm of motor engineers before joining the 1st Royal Tank Regiment to complete his National Service. After leaving the Army Pete returned to Lambourn where he was to meet a local girl Beryl and they later married at Thatcham in Berkshire.

The following years saw the arrival of Jane in 1958 and after moving to Great Shefford in the Lambourn Valley, Adrian was born in 1960. After spending several years working at his brother-in-law's busy garage Pete decided that there were better opportunities to be had in the bustling town of Swindon and so, in 1966, relocated to Stratton St Margaret, going on to work at, what was then, Pressed Steel Fisher.



With the encouragement of a neighbour, a successful entrepreneur, Pete was to start his own business in 1973 located in small premises in Old Town. However, it was soon to be that larger premises were needed and after securing a long lease the business, known as J.R. Bell, Motor Engineers, moved to the garage workshops and filling station on the High Street in Wanborough, where Pete was joined by his wife Beryl and son Adrian. During the following 32 years the business became a focal point of the village and prospered thanks to a loyal following of customers from Wanborough and the surrounding area. Here Pete and Beryl were able to make many friends, and aside from keeping wheels

turning, Pete was equally at home offering gardening tips and advice and sharing his experiences gained through his passion for his garden.

After retiring in 2008 Pete enjoyed spending time with his family including four grandchildren and four great grandchildren. He was able to spend many happy hours tending his garden and during the winter evenings building military models to include a 1/6th scale Comet tank weighing some 70kgs.

As Pete's mobility began to fail and after a long spell in hospital he moved to Park View Nursing where he was to spend his last days. Pete will be greatly missed by his family and friends.

Beryl, Jane and Adrian would like to thank the many people who sent cards and messages with lovely words of condolence and who turned out on the High Street to pay their respects on the day of his funeral.

The difficult times we are faced with meant that a small family funeral was all that was possible however a memorial service will be held at St Andrew's Church, Wanborough when further restriction have been lifted.

Jane Archer

Meet the gas team



Over the past year Wanborough and Liddington have been in receipt of new gas mains pipes. The folks fitting the pipes have been beavering away, most of us only aware of them if they happen to be working near our homes or blocking the road we want to travel along.

However, the three lads that do the majority of the work have been lurking around Ham Road, Church Road and Kite Hill since the start of lockdown. We have been getting to know them better as they like the wild birds as much as we do, they were very excited when a Robin made friends and love the Red Kites. Their names are

Russell, Ron and Aaron. They all travel up from Bristol each day to start work at 8am. If you would like to make friends, they like 2 teas and a coffee, all with milk and 2 sugars, (cake, biscuits or ice-cream not compulsory), cups provided!



The Lads are classed as Key workers and have been working in all weathers to get the job done with as little interruption to us as they can. Their main role is to dig holes, push the pipes through from one hole to the next, connect the pipe to our homes and refill the holes again. They are subcontracted to Wales and West Utilities and have a nifty gadget they use to drill a tunnel under the road. The drill worms its way through the subsoil, avoiding all the other utility pipes, and then pulls the new gas pipe back along the tunnel it created. A specialist team of gas fitters then steps in to ensure the connections are sealed properly, the pipe is filled with gas and that the supply has been safely connected to each home. They will be with us all a little longer yet, in fact they have about another year of work to do. At the time of writing, they have yet to connect the bottom of Kite Hill, Rotten Row, the High Street from Callas Hill to Lotmead, Burycroft, The Marsh and Horpit.

Remember that when the sign says the road is closed – it means **the road is closed**. Based on the numbers of cars we have seen trying to get through, and one bus, many people are unable to read! The result is we have been entertained by some interesting car manoeuvres to get vehicles back down the hill again. If you ignore the notice you may well find your car in a very deep hole.



A little kindness goes a long way, so if there is a problem talk it over with them, they will do their best to help resolve it. With Covid in mind they have a hand sanitising station set up nearby. Of course, it is really for anyone wanting to visit us at the moment! It has been a pleasure to have them working near us. Please look after them when they get to your part of the village.

Anita Basevi

The Joke Box

A little light humour to help break the September blues.

- I got kicked out of a flat earth group for asking if the six foot social distance rule pushed anyone over the edge?
- No wonder white boards are so popular in the classroom these days.....they are remarkable!
- The most pointless purchase I have made so far a 2020 wall planner!
- I'm going to stay up on New Year's Eve this year. Not to see the New Year in, but to make sure this one definitely leaves!
- I was talking to a friend of mine last night who said he didn't understand the principles of cloning, I said "that makes two of us!"
- I believe the person who invented the first toothbrush used to live in the village, but there is no plaque on the house!

Keep smiling all! The Village Joker



RICHARD GRIFFITHS
Dovetail Building Ltd

Extensions - Loft Conversions
 Conservatories - Roof Tiling & repairs
 Blockpaving - Patios - Decking
 All types of Carpentry & made to measure Joinery
 Fully fitted Kitchens & Bathrooms
 Hardwood flooring - Ceramic Tiling
 Structural Alterations - Plastering

 **dovetail_building** 
 REFERENCES AVAILABLE

Iris Cottage Lower Wanborough
Tel: 791581 / 07768 448 666
Email: richgriffiths@rocketmail.com
Third Generation Building Company

FF Floors Floored
 Specialists In All Aspects Of Floor Covering
 From Luxurious Carpets To Hardwearing Economy
 Beautiful Real Wood To Standard Laminates
 Stone Tiles To Ceramics

We also Supply & Fit Underfloor Heating
 Please Call For Help And Advice
 01793 791581 Mobile 07768448666

walkies!
 of Wanborough



Local Dog Walking and
 pawfect Pop-in Pet Care
 Service for when you
 can't be there...

Local Ladies based
 in Wanborough
 Insured
 First Aid Trained
 DBS checked
 with great Wellies!!

Contact: 07501 197793 Email: WalkiesofWanborough@gmail.com

XXXXXXXXXXXXXXXXXXXXXXXXXXXX

Mobile Hairdresser

Working from home or mobile to yours

Introductory prices

Contact Denise on 07902865910

XXXXXXXXXXXXXXXXXXXXXXXXXXXX

Chimserv

www.chimserv.com

Wood burning stove supply & installation
 Chimney lining & sweeping
 Fireplace design & build
 Cows, pots & birdguards





All types of building work &
 property maintenance undertaken

07860916790 or 01793 491011
info@chimserv.com

PLUMBING & HEATING

FRANCIS ANDREW


 

Central Heating Installation & Repairs
 Boiler Installation & Repairs
 Landlord Certificates
 Bathroom & Kitchen Installations
 All domestic Plumbing

No call out charges
 Free estimates
 24hr service

Fully Qualified & Insured

Mob: 07720 245333
 Home: 01793 791542
 Email: faplumbing@hotmail.com



HERITAGE TREE CARE

Professional Tree Surgeons

**Comprehensive Service
Qualified Staff
Fully Insured**

- ✓ Pruning and Shaping
- ✓ Felling and Removal
- ✓ Hedge Cutting
- ✓ Stump Grinding
- ✓ Tree Planting

Free quotations and advice
Call Ian Walding (N.C.Hort / N.D. Arb)

01793 790210

email: ian@heritage-treecare.co.uk

www.heritage-treecare.co.uk



**Sugarcraft
and
Cake
Decorating
Supplies**

1 Hilliers Yard, Marlborough SN8 1BE
01672 288080

Write Learn Tutoring English Tuition

Heather Hawkins
Dip Classical Studies, BA, MA, MTA

- Enthusiastic, dedicated one to one English tuition
- KS1 - Undergraduate
- SEN welcome
- Individually planned lessons
- DBS enhanced checked
- Competitive rates

Tel: 07876763795 email: heatherhawkins@btinternet.com



ROB SPURR Planning & Design Consultant

Architectural plans drawn for extensions,
conversions and internal remodelling.

I deal with all aspects of planning applications
and building regulations, Listed Buildings and
Conservation Area consents.

3D bathroom designs and specifications.

Rob Spurr trading as Sun Design & Consultancy Ltd

Southview, 22 Ham Road, Wanborough

Email: robspurr@btconnect.com

Tel: 01793 790381

Mob: 07786 933460

QUALIFIED DRUM TEACHER **WANBOROUGH**



COMPETITIVE PRICES!
SPECIAL OFFERS!
ALL STYLES AND GENRES!

FOR MORE INFO
PLEASE
CONTACT:



AIDAN O'NEILL - CRUNCH ENTERTAINMENT

info.crunchentertainment@gmail.com

07760452222

Advertise here for
£120 per year

lydenmagazine@gmail.com

mark jerome

painter & decorator

All types of interior and exterior decorating
using the latest in dust free technology

Transform your solid wood kitchen with paint
using the best hardwearing paint finishes
available

"Thanks for a fantastic job!"
Debbie Moxon, Baydon Post Office

01793 790307

High St, Wanborough

James's Landscaping and Gardening Services



*Grass Cutting *Hedge Trimming
*Small Trees *Garden Maintenance
*Clearances

Hard Landscaping-
Various Including *Fencing
*Gates *Paths *Paving *Sheds

Locally based in Wanborough.
For quotations, bookings or
information- please telephone
James Robb 07863 599991

M J SMITH PLASTERING SERVICES

CHURCH ROAD WANBOROUGH

- FRESHEN UP OLD WALLS AND CEILINGS
FOR DECORATION
- RE-PLASTER DATED ARTEX AND CEILINGS.
- EXTERNAL RENDER AND FLOOR
SCREEDING
- INSURANCE WORK UNDERTAKEN
- ALL WORKS GUARANTEED

25 years experience

01793 791042

07764 968525

Marlonsmith@sky.com

HB'S BEAUTY

Hannah Thoburn
BEAUTICIAN

Call: 07789 005121

Hannah_thoburn@icloud.com
The Verne, The Marsh, Wanborough, SN4 0AR

Woodfix

Kitchens, bathrooms and carpentry

Quality Kitchens & Bathrooms
supplied and fitted

Bespoke Built-In Cupboards,
Shelving and Worktops

All types of Flooring,
Replacement Doors & Loft Ladders

01793 790752

woodfix@btinternet.com

www.woodfix.co.uk

A local family run business
20 years experience
Expert advice & design and
Project management
CALL US FOR A FREE QUOTE



Hooper's Field Hall, Wanborough

Tuesday 9.30-10.15am

Zumba Gold classes are low impact to suit the needs of the active older participant as well as those just starting their journey to a fit and healthy lifestyle.

No dance experience needed! Just wear comfy clothes, suitable shoes and bring a bottle of water.

Come and join this friendly, welcoming class.

Cost £5 a class

Contact Lorna Mackay for details:

Tel: 07582 612778 Email: lornazumba@hotmail.co.uk

Pilates Classes

Millbrook Primary School, Freshbrook
Monday 6 - 7pm

Hooper's Field Pavilion, Wanborough
Tuesday 6.30 - 7.30pm

St Paul's Church Centre, Covingham
Thursday 6.30 - 7.30pm & 7.40 - 8.40pm

Christ Church Community Centre, Old Town
Friday 2 - 3pm

Interested? Contact Sonia Jones on
☎ 01793 791386

✉ pilates@sonia-jones.com

🌐 www.sonia-jones.com

Please visit my website for other venues and services

PC Doctor Dan

115 High Street, Cricklade

Tel: 01793 759192 Mob: 07890 377517

Home & Business Computing

- ✓ Free pick-up and drop-off service
- ✓ Purchasing advice, setup and installation
- ✓ Secure wireless and home networking
- ✓ Share files, photos, music and printers
- ✓ Virus and spyware detection and removal
- ✓ Training to meet your specific needs
- ✓ Hardware/ software repairs and upgrades
- ✓ Improve PC performance and reliability
- ✓ Create backups to protect key information
- ✓ Consultancy and managed service options

20 years IT experience @Intel Corporation

www.pcdoctor-dan.co.uk

Barrett Accounting and Tax Services

Chartered Accountants
•
Chartered Tax Advisers



LIMITED COMPANIES,
UNINCORPORATED
BUSINESSES AND
INDIVIDUALS

ACCOUNTS
BOOK-KEEPING
TAX RETURNS
PAYE • PAYROLL
VAT • TAX ADVICE

If you want service that gives
value for money, whilst being
professional and efficient,
contact us on

01793 741250 or
mail@barrett-ats.co.uk



**Yoga Classes
for all abilities**
Wanborough Village Hall
Tuesdays 7.45—9.15pm

Contact Nicki Clinch 07866957234

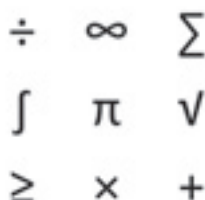
Email: nicki_clinch@hotmail.com

web: <http://swindon-yoga.co.uk>

Pregnancy, Post natal yoga and baby massage

Maths Tuition GCSE & A Level

- Qualified Maths Teacher
- GCSE exam marker
- Over 20 years teaching experience
- 1:1 lessons
- Revision lessons
- Flexible hours
- Based in Wanborough



Helen James BSc(Hons) PGCE MA
Email: helenmjames11@gmail.com Tel: 07776 309633
www.helenjamesmaths.co.uk

RABBIT HILL PROOFREADING

Maria Hawkins LLB

Society for Editors & Proofreaders Entry Level Member

Providing a professional finish to your document

- Work undertaken on any kind of document on paper or electronically
- Checking for all errors in grammar, spelling, layout and presentation
- Competitive rates

Tel: 07592 392214

Email: mariahawkins@btinternet.com



Professional vehicle valeting and detailing

• SERVICES •

- Full Valet
- Protection Detail
- Winter Protection Detail
- New Car Preparation
- Enhancement Detail
- Paint Correction Detail
- Tailor Made 'In Depth Detail'
- Specialists in Ceramic Coating application

• Newly added for the winter months is our Winter Protection Detail •
For more information on prices and what is involved in our services, please do not
hesitate to email or call us!

All of our services can be tailor made to suit your wants and needs.



ADAM COTTAM
indephtdetailing@outlook.com
07794 979 353



Video Photography Audio Cine

Video Transfers

VHS - Camera Tape / Cards - DVD

Cine Film Conversions

Standard/Super 8 - 16mm

Slide Negative Scanning

35mm - 120 format - slideshow creation

Audio Conversions

Cassette Tape - Open Reel - Mini Disc - CD

Event Filming - Creative Editing

Web Video Films - DVD Production

Providing professional services
in Wanborough since 1998

Tel: 01793 790842

ian@takeonestudio.co.uk

Visit our showroom at
14 Lotmead Business Village, Wanborough

CHRISTOPHER LAWRENCE DESIGNS

**Quality Craftsmanship &
Expert, Innovative Design**



We design, sell and install kitchens
manufactured in Great Britain and
have three innovative showrooms

*We also supply a wide range of small and
large appliances, cabinets, doors, handles,
lighting, plinths, worktops, taps, flooring,
radiators, splashbacks, pop-up and USB
sockets, as well as wet room and bathroom
fixtures and fittings. We sell direct and can
supply/deliver only or supply and install
any of the above products.*



Best of Houzz Awards 2018 & 2019 for
Highest Levels of Customer Satisfaction.
Read more reviews: <https://bit.ly/2srnlyO>

Office: 01793 790108 Mobile: 07930 699500
info@chrisltdesigns.co.uk www.chrisltdesigns.co.uk



Cat Care & Services

If you need help caring for your pet or are away from home and don't
want the stress of the cattery 'Cat Care & Services' will meet your and
your pet's needs

Our Visits will include:

- Lots of socialising, play
- Lap time and attention for your pet
- Swindon and surrounding areas
- £10 per visit, (visits are 1 hour)



Cat Care & Services



Helen Spring: 0777 0767 916

BAYDON MOWERS

Garden Machinery Specialists

- New Machines
- Servicing & Repairs
- Collection & Delivery for ride-ons
- Spare Parts
- Welding & Brewing gases

Mon - Thurs 9am - 5.30pm

Fri 9am - 5pm

Saturday 9am - 1pm

Unit 1 Skylarks | Bytham Road
Ogbourne St George | Marlborough
Wiltshire SN8 1TD

**WE HAVE
MOVED!**

**01672
841207**

richard
james

incentivised.com

Local Agents with Local Knowledge
Our people make the difference...

"Living in Wanborough puts me in a unique
position when it comes to selling the benefits
of the parish
to any potential buyers. I have worked in the
local area for over 16 years and specialise
in the sale of village and country homes
between Swindon, Marlborough and Devizes."

Ross Sutton
Director



Contact your local agent today on
01793 814542 or 07889 366130
ross@richardjames.info

Personal Announcements

New Babies



Welcome to Lily Langlay-Smith
25 June 2020 weighing 5lb 6oz

Delighted grandparents Sally and Tim, who live in Upper Wanborough, send love and Congratulations to parents Lucy and Chris, who were married at Wanborough Church on the 6th April 2019 and are active members of the tennis club. Welcome to beautiful Lily ! Xx

Happy Birthday

On the 12th September Will Sumner will be 18. As a family we are very proud of the young man he has become. He's a qualified referee aiming to move up the levels, currently doing his FA Level 2 coaching course and coaching the U7's team for Wanborough. He has plans for his future but also has his heart in the right place to help people whenever he can. **The Sumner family.**



Our dearly departed

Patricia Anne Wakefield at North Wiltshire Crematorium
on Thursday, 6 August 13:00 – 14:00

Burial of Ashes of Audrey McFadyen at
on Friday, 4 September 11:30 – 12:30

If you are having a celebration, want to send a message of thanks or remember someone dear to you, let us know and we will add your message here. Send messages to Lydenannounce@gmail.com

Privacy Statement

1.The Lyden Magazine needs to keep a small amount of personal data about its subscribers to enable the correct delivery and renewal of subscriptions. 2.We will collect, store, use, amend, share, destroy or delete personal data only in ways which protect people's privacy and comply with the General Data Protection Regulation (GDPR) and other relevant legislation. 3. We will only collect the following information: Name and Address for delivery 4. We will provide individuals with details of the data we have about them or amend or delete when requested by the relevant individual. 4 We will keep all personal data secure. 5.We will not share any personal data with third parties or individuals outside of the Lyden distribution team.

St. Andrew's Church Wanborough

The Church is currently offering limited services, we will resume printing cleaning details and Sidespersons' roster etc when normal patterns resume.



There are Books of Remembrance in All Saints', Liddington and St. Andrew's, Wanborough. If anyone wishes to have a name recorded there, please contact a Churchwarden.

Please be aware that advertisers book annually, and the ads in this issue are their standard artwork - many advertisers will either be shut or working in a limited manner. I am sure local businesses will not mind you calling to check if they are able to help you at the current time, and if they can, will appreciate the business.

Copy date for the Lyden is 14th of the month prior to publication

Wanborough Playgroup

Village Pre-School

- Early Years Foundation Stage Curriculum delivered by friendly and qualified staff in a stimulating environment in a large hall with good sized secure garden.
 - Registered with Ofsted to take children from 2 years old
- Registered to receive Universal 15 hour and Extended 15 hours funding
 - Playgroup hours: Monday-Friday 9.00-13.00, Optional 08.45 start

ALL SESSIONS ARE TERM TIME ONLY AND SUBJECT TO AVAILABILITY

Village Hall, High Street, Wanborough, SN4 0AD Telephone: 07444 352687
e-mail: wanboroughplaygroup@hotmail.co.uk

Website: www.wanboroughplaygroup.org.uk Facebook: @wanboroughpreschool



Registered Ofsted Number

109096

Registered Charity Number:

1026150



CONTACT DETAILS FOR LOCAL ORGANISATIONS

BENEFICE

Vicar

Rev. Bill O'Connell T:791359 E:villagevicar@hotmail.co.uk

Captain of Wanborough and Liddington Bellringers

Tony Pullan T :790904

Practice 1st, 3rd and 5th Fridays Wanborough, 2nd and 4th Fridays Liddington

Liddington 100 Club

Caroline Tams T: 07876 714950 E: ctams1@icloud.com

St Andrew's Flower Club

Chair: Kay Cullimore Tel 790458

Treasurer: Jackie Midwinter Tel 950852

Secretary: Alison Carse 790858

WANBOROUGH PARISH COUNCIL

Chairman: Bob Biggs, Wanborough Herb Nursery, Tel: 01793 790327

E: clrbiggs@wanborough.info

Vice Chairman: Roger Whitfield, 2 Manor Orchard, 791820

E: clrwhitfield@wanborough.info

Clerk: Angela Raymond, Tel: 07588 769829

E: clerk@wanborough.info

LIDDINGTON PARISH COUNCIL

Chairman: David Lomax, 38 Purley Road, Liddington. Telephone 01793 790440 / 07931 895044

Vice Chairman: Adrian Moore, Medbourne House, Medbourne Lane, Liddington. Telephone 01793 790391

Clerk: Val Curtis, 4 Mallard Close, Swindon, SN3 5JQ, T: 01793 530818

M: 07989 647438 E: parishclerk@liddington.org

BOROUGH COUNCILLOR

Gary Sumner, Blenheim, Kite Hill, Wanborough, SN4 0AW

T:790814 E:gary@ridgewayvillages.co.uk

WANBOROUGH PRIMARY SCHOOL

Headteacher: Andrew Drury, Tel: 790269

Clerk to the Governing Body: Lana Tilley Tel: 790269

PTA : Chair: Guy Simmonds c/o Wanborough Primary School,

E: contactpta@wanboroughprimary.org

www.wanboroughprimary.org

BEAVERS/CUBS/SCOUTS

Group Scout Leader: Tessa Lanstein, Tel: 07795 057420

(Waiting lists are in operation so please make early contact)

Boys and Girls aged 6-8 / 8-10½ / 10½ -14 meet weekly in term time.

WANBOROUGH VETS CYCLING

Secretary: David Halfhead, Tel: 790852

WANBOROUGH JUNIOR FOOTBALL CLUB (The Wasps)

Secretary: Matthew Strickland T: 07754 978487

E:secretary@wanboroughwasps.com

Details of Team Managers U7(Year2) to U18(Year 13) at

www.wanboroughwasps.com

WANBOROUGH HANDBELL RINGERS

Nicky Pullan, 2, The Beanlands, Wanborough. Tel: 790904

WANBOROUGH SHOW SOCIETY

Chair: John Basevi M:07843 510 328

Show Secretary: Mike Thompson M: 07768 558799

info@wanboroughshow.org

WANBOROUGH CRICKET CLUB

Hon. Sec. : Andy Thompson, Tel: 01793 852623

WANBOROUGH TENNIS CLUB

Hon. Sec. Melanie Brough 741277 melaniebrough2@gmail.com

Membership Sec. Anica Alvarez Nishio -

wanboroughmembers@gmail.com

WANBOROUGH BOWLS CLUB

Hon Sec. Mags Sanders Tel. 01793 614861

info@wanboroughbowlsclub.org.uk

WANBOROUGH BEER FESTIVAL/THE OLD BOILERS

Secretary: Barry Hillier 07443 490019

wanboroughbeerfestival@gmail.com/theoldboilers@gmail.com

WANBOROUGH VILLAGE HALL

Lettings Secretary: Karen Hawkins 07823 490153

E:vvhlettings@gmail.com Hall calendar on Wanborough.info

Chairperson: Dion Dean 07841 866773

Secretary: Sarah Ingram 07530 451549

WANBOROUGH PLAYGROUP (Village pre-School)

Supervisor: Sarah Ingram, Tel: 07444 352687 (during Playgroup hours)

Chair of the Committee: Kayleigh Bizley 07818 432657

wanboroughplaygroup.org.uk

wanboroughplaygroup@hotmail.co.uk

WANBOROUGH PARENT AND TODDLER GROUP

Enquiries: Alicia Batty, Tel: 07895539287

e-mail: mr-mrspabatty@hotmail.com

(Wednesdays 1.10 – 2.45pm (during school term), at Wanborough

Village Hall)

WANBOROUGH THEATRE CLUB

Hon. Sec.: Mrs. D. Rawlings, Tel: 01793 979170

BISHOPSTONE AND HINTON PARVA WI

Secretary: Sue Reade. Tel: 710208

E: sue_reade@btinternet.com

BRIDGE CLUB

Jim & Joy Ball, Tel: 790293. (Friday evenings at Hinton Parva Village Hall)

LIDDINGTON SCOTTISH DANCING GROUP

Linda Clarke. Tel: 790158

Thursday evenings 7.45 – 10pm (September – May at Liddington Village Hall)

LIDDINGTON VILLAGE HALL

Hon. Sec.: Alison Babbington, 10 The Street, Liddington SN4 0HD

Chairman: Mr. Matthew Bowman, Meadowbank House, Medbourne

Lane, Liddington SN4 0EY Tel: 791401

matthewbowman56@gmail.com

Hon. Lettings Sec.: Sarah Hill, Church Rd, Liddington Tel: 790104.

sarah@jonhill.co.uk

LOCAL WEBSITES:

For further information and news from our four villages, visit: www.liddington.org or www.wanborough.info

For Bishopstone and Hinton Parva visit www.villagenewsletter.org

LYDEN MAGAZINE CONTACTS

Editorial/Advertising: Andrea Jerome Tel: 790307

lydenmagazine@gmail.com

Subscriptions: lydensubs@gmail.com

Announcements: lydenannounce@gmail.com



Beacon Developments

RELIABILITY - QUALITY - VALUE



specialists in home transformations

- new builds
- extensions
- loft conversions
- listed buildings
- kitchens
- bathrooms
- design & planning
- project management

E: info@beacondvelop.co.uk T: **01793 790245** W: www.beacondvelop.co.uk



Est.
1986

Specialists in village property
for over 30 years.

Contact us now for your
free valuation.

01793 618080
sales@chappells.uk.com
lettings@chappells.uk.com

Advertise here for
£80 per year
lydenmagazine@gmail.com

PAUL BISHOP

Interior and Exterior Painter and Decorator
Free Estimates
Competitive prices

1 Manor View, Liddington
Call Paul on 790768 / mobile 07770 751275

Chappells
ESTATE AGENTS

Your Village specialist when it comes to selling or renting. Free valuations and market advice.

01793 618080

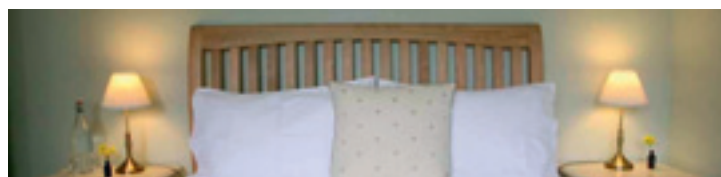
colin@chappells.uk.com / phil@chappells.com
www.chappells.uk.com

JUDI MOORE

YOUR WANBOROUGH BASED
TRAVEL AGENT

FULLY ABTA & ATOL REGISTERED
Call 01793 791238 or email me

judi.moore@thepersonaltravelagents.co.uk



Meadowbank House

Traditional Bed and Breakfast
Restful and luxurious accommodation in Liddington
01793 791401 www.meadowbankhouse.com

A & B Domestic Appliances

Guaranteed repairs to washing machines and tumble driers. A genuine professional repair service.

Contact Andrew Matthews at:

E: aandbdomestic@gmail.com

Tel: 01793 536332 Mobile: 07850 665925

11 Farman Close, Eldene, Swindon, SN3 6DP

The HAIR and TRICHOLOGY Clinic

Treatment of Hair and Scalp Conditions
NHS & Private Wig Service 01793 741136

Cameo Hair Salon Ltd

Private hairdressing rooms available, full PPE

7 High Street, Chiseldon SN4 0NQ

01793 740147

www.hairandtrichology.co.uk

Mowerfixer

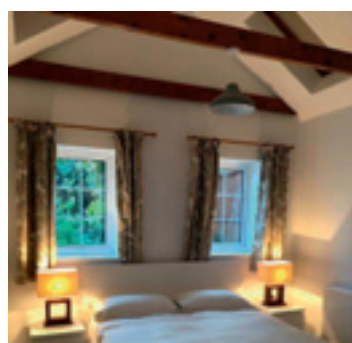
maintenance/repair service mowers,
hedgecutters trimmers etc. for the Ridgeway villages
New & 2nd hand garden machinery for sale
Doug Stevens
0789 979 1833 doug@mowerfixer.co.uk



**richard
james**

Find me on [incentivised.com/rossutton](https://www.incentivised.com/rossutton)
Wroughton: 01793 814 542
Mobile: 07889 366 130

INCENTIVISED.COM
REAL ESTATE AGENTS



The Old Post Office

Beautifully converted
one bed accommodation.

Available for
short term rent.

Wanborough, Wiltshire
07903 210505

walkies!

of Wanborough



Local Dog Walking
and Pop-in Pet Care
Service for when you
can't be there...

Back To Work? 20% off until 30th Sept. 2020

Local Ladies based
in Wanborough
Insured
First Aid Trained
DBS checked
with great Wellies!!



Contact: 07501 197793 Email: WalkiesofWanborough@gmail.com